

commune d'Aspremont
PLAN D'OCCUPATION DES SOLS

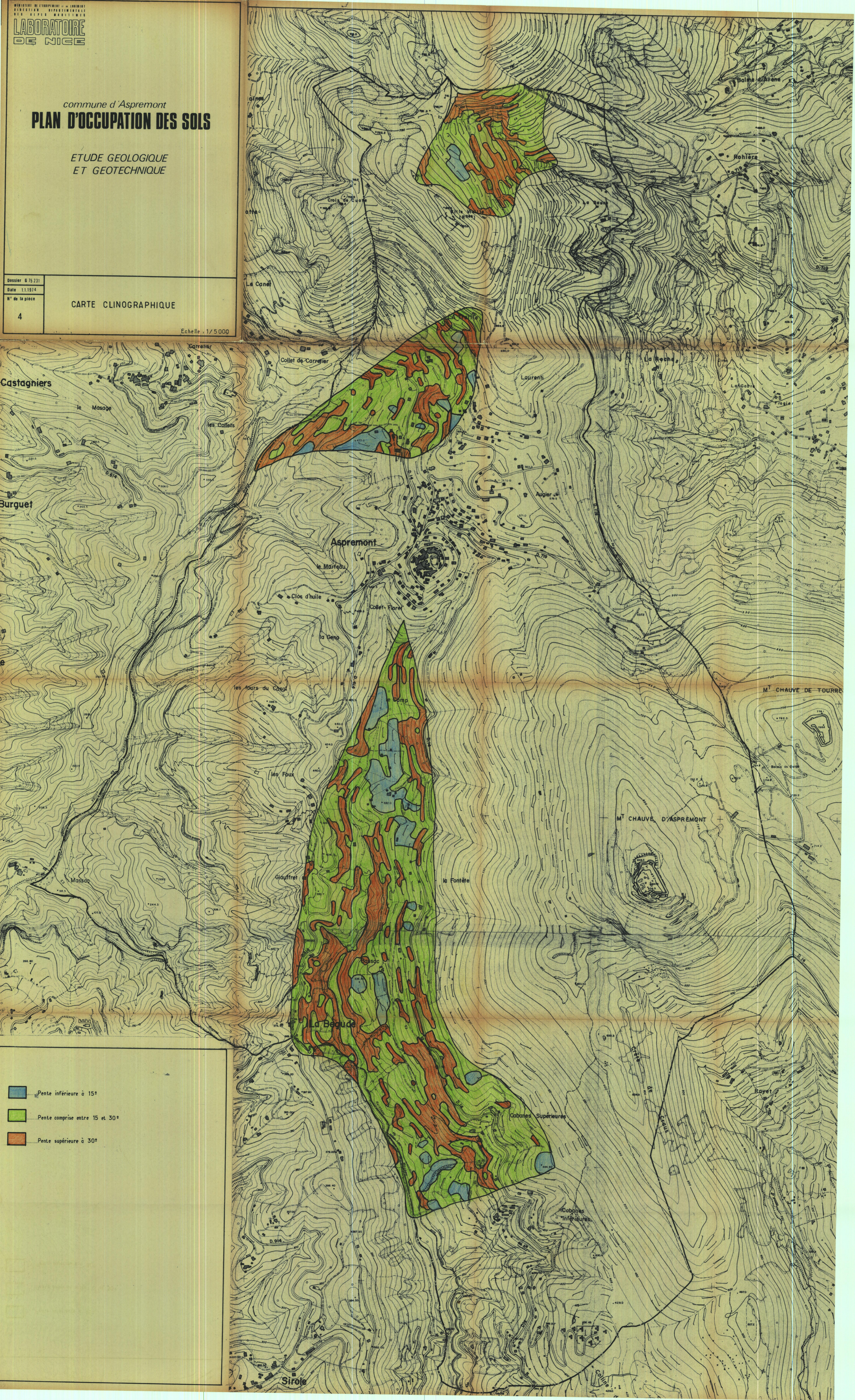
ETUDE GEOLOGIQUE
ET GEOTECHNIQUE




Dossier G 75 231
Date 11.1974
N° de la pièce

CARTE CLINOGRAPHIQUE

4

Echelle 1/5000



-  ...Pente inférieure à 15°
-  ...Pente comprise entre 15 et 30°
-  ...Pente supérieure à 30°